



Education
Scotland
Foghlam Alba

Parent Council AGM 2019

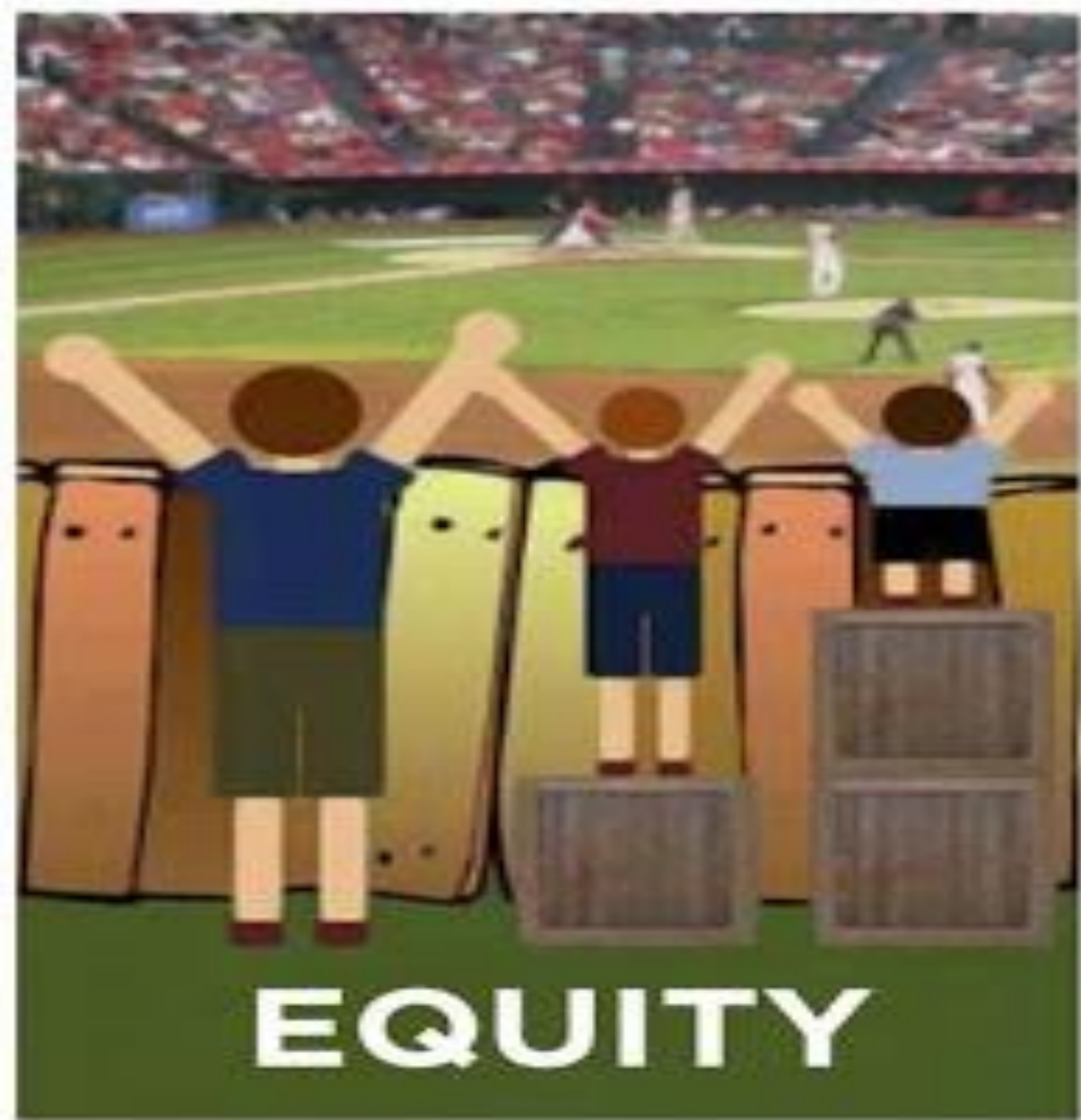
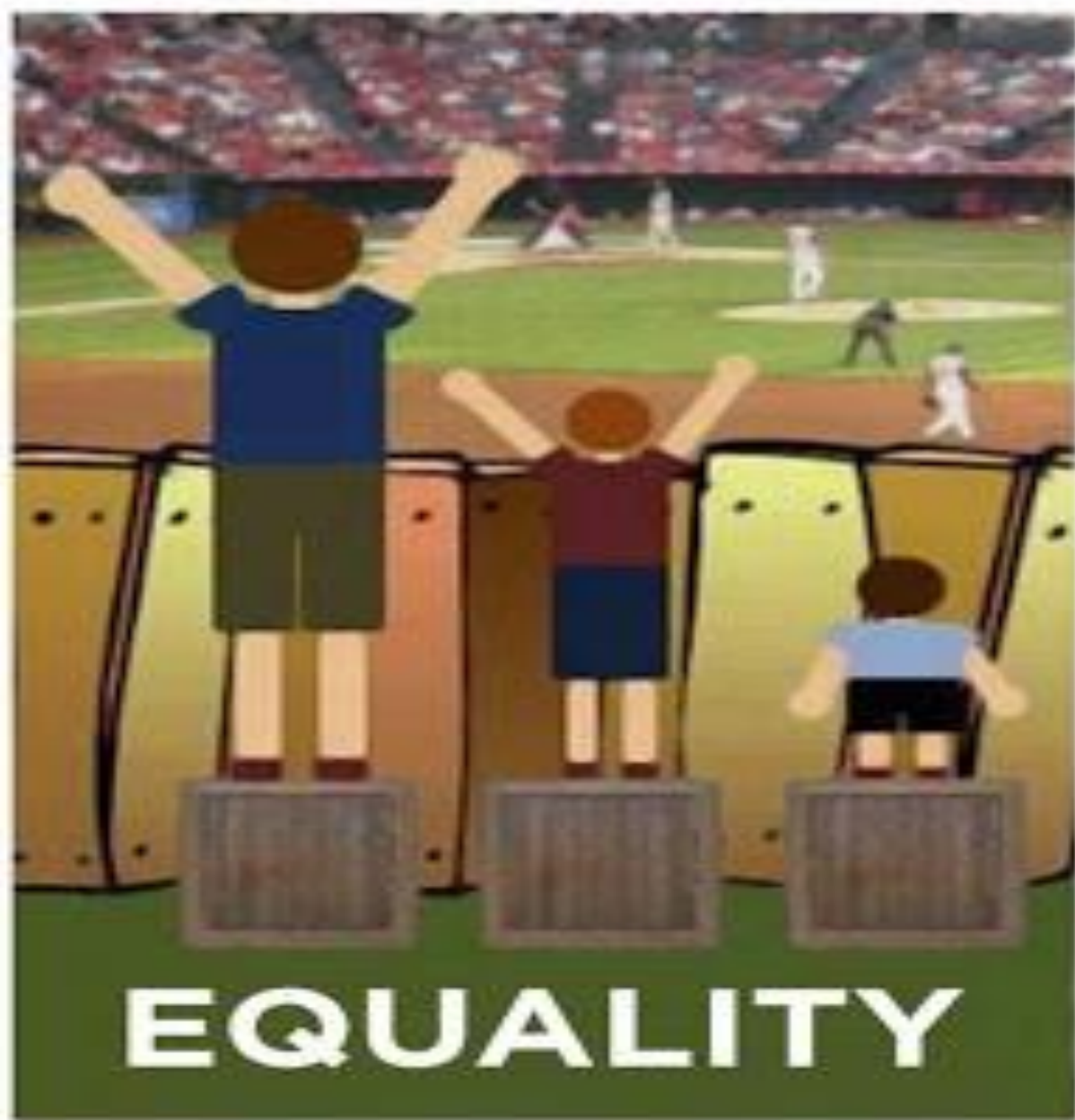
Colquhoun Park Primary



Pupil Equity Funding



- Pupil Equity Funding is additional funding allocated directly to schools based on free meal entitlement. This is an extension of The Scottish Attainment Challenge which the First Minister launched in February 2015.
- The purpose of this action was to bring a greater sense of urgency and priority to achieving equity in educational outcomes. Equity can be achieved by ensuring every child has the same opportunity to succeed.



Why are the Government doing this?

- Considering research and data, the Government has found that there is a distinctive gap between the least and most disadvantaged children in Scotland
- This gap begins in early years and continues across the learner journey - this is evident in a range of data.
- Growing up in Scotland, SSLN results and national qualifications all show disadvantaged-related patterns.
- The gap in attainment is linked to the destinations of children and young people after school.



How much is it?

- Each school has received £1200 for each pupil in P1-S3 in receipt of free school meals. CPPS Primary has been allocated **£74 520** for the financial year 2019-2020.

How can it be used?

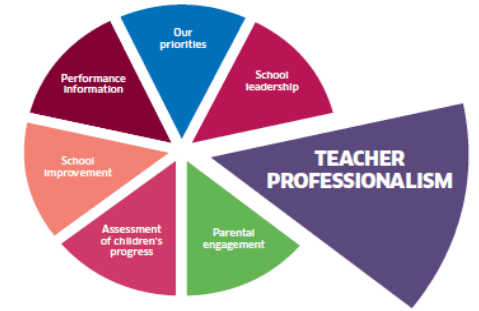
The money must be used to support activities and interventions which focus on and lead to improvements in Literacy, Numeracy and Health and Wellbeing.



So, what have we done so far?

- Head teachers have received support and guidance from the Local Authority.
- All Head Teachers across Scotland have received input from the Scottish Government and Education Scotland in March.
- **As a school team we have considered all of the information we have received to date and we have done the following...**

School Improvement Planning



- We have evaluated our work within the school and we have identified what works well and where our areas for school improvement:
- We have looked at how well our children are doing, particularly in literacy, numeracy and health and wellbeing
- We have looked at how we continue to improve our children's health and wellbeing
- We have considered the big picture of improvement in employability skills and sustained positive school leaver destinations for all young people

As a school team we have talked...and talked! So what does the 'GAP' mean to us?



- Continuing to create a school which enables us to build on effective learning
Creating a learning environment which is calm, focused and supports our values
Creating an environment which is inspiring and children are motivated to learn and do their best i.e Primary 1 and Early Level learning through play
We have carefully considered skills for life, learning and work

What we thought about...

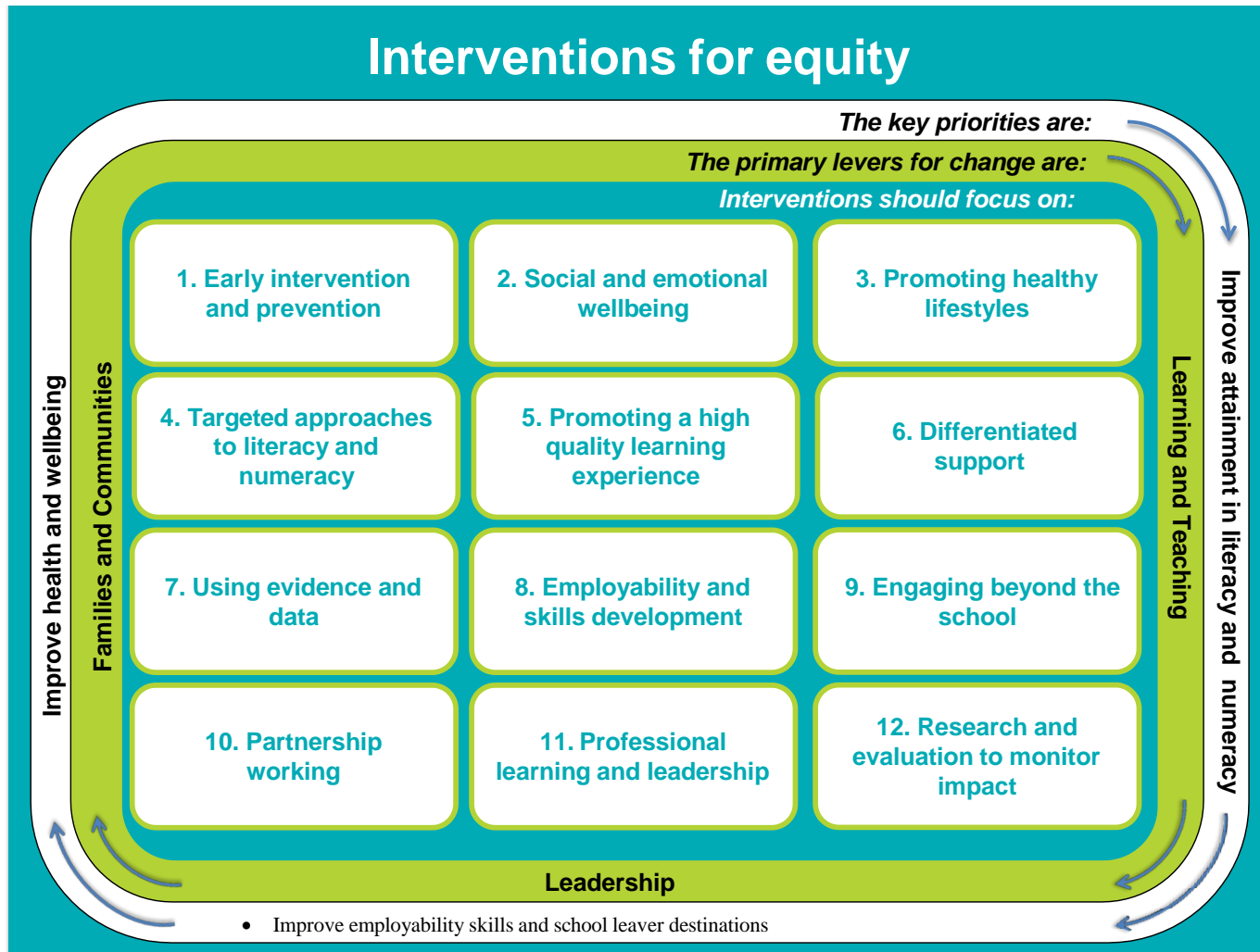
2 key questions for every school

- What helps our children get better at their learning?
- What will help children improve in literacy, numeracy and health and wellbeing?

If you always do
what you have
always done, you
will always get what
you always got.



The teachers have been working hard...



What can we do to help the boys and girls in the classroom?



As a school team we decided to focus on...

1. Early intervention and prevention

4. Targeted approaches to literacy and numeracy



9. Engaging beyond the school

2. Social and emotional wellbeing



Skills for Life,
Learning and Work

Transforming lives through learning

PEF to support Raising Attainment and Achievement

- **Additional staffing** to improve development of core literacy and numeracy through team teaching and targeted support and challenge interventions from P1-P7. **RAT staff**
- **Early Years Worker** in Primary 1 and into 2 to support Play2Learn
- **0.5 Support staff** - support and challenge
- **0.2 Family Learning** -to carry our family learning SIP priorities and cover for creche Families Connect
- **Wider Achievements**- money to support residential trips and school trips and activities
- **Staff Training** - writing and cover to visit and work with colleagues **working with Learning Partnership Group**
- Extend **parental involvement** through Seesaw and skills passports
- **Resources** - Play, Writing resources, numeracy resources, Clicker 7 and support materials

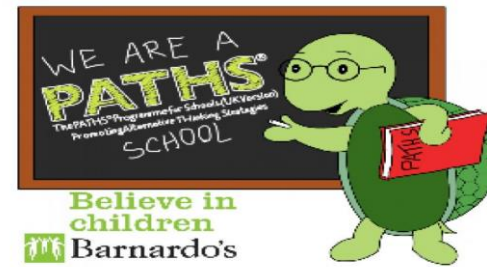
CURRICULUM FOR EXCELLENCE ATTAINMENT LEVELS at JUNE 2019

NIF Levels 2018-2019	READING	WRITING	L & T	NUMERACY
Early Level- by end of P1	87%	87%	90%	90%
First Level - by end of P4	81% (+2%) 79%	64% (-8%) 72%	88% (+24%) 64%	74% 74%
<i>end of P3</i>				
Second Level - by end of P7	79% (+8%) 71%	71% (+10%) 61%	100% (+11%) 89%	75% (+4%) 71%
<i>end of P6</i>				

Learning , Teaching and Assessment School Improvement Plan 2019-20

- Raising Attainment in **writing** -Talk for Writing - whole school and ELC to improve writing skills and raise attainment in writing. **staff training and resources,**
- Continuing to raise attainment in **numeracy** focussing on early arithmetical skills(SEAL) and Maths recovery approaches
- Continuing to develop a progressive whole school approach to Maths and improving Mental Agility skills across the school including **number talks and problem solving approaches.**
- Further develop **Play** approaches at Early Level following on from successful pilot. Play approaches now in Primary 2 to include outdoor learning.
- Continuing to further enhance **Digital Learning** across the school and Nursery e.g word processing; coding; presentation skills and work towards Digital Schools Award - **investment in laptops, IPADs, Tablet and learning Apps**
- Build staff and pupil confidence in the use of AifL strategies
- (Assessment is for Learning)

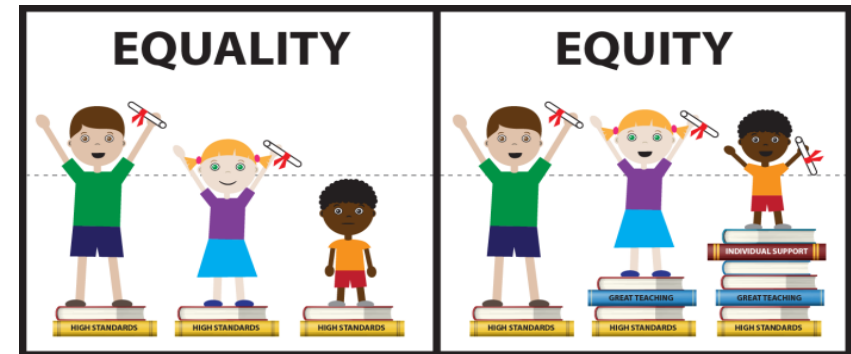
Health and wellbeing...



- *H&WB programme and resources* audited and consultation to take place with stakeholders:
- *Skills for Learning, Life and Work* - engaging in range of opportunities to develop pupil awareness of skills; use of My World of Work and community partnerships in STEM approaches (DYW)
- Investment in *Family Learning opportunities* and showing families how they can help with numeracy and literacy at home and to have fun learning together
- *Autism Advisor and Nurture* approaches - PEF allows staffing cover
- *Communication and Parental Engagement* - embed skills passports and roll out SeeSaw to all classes
- *Learning at Home* - Survey parents, staff and pupils about home learning and collate responses

What now?

- Information will be put on the website. We will continue to communicate progress on Twitter and through Newsletters and information sessions.
- We start the ball rolling!!!!





Thank you!

Any Questions?